



Eco Biosciences





C O N T E N T

Eppendorf | New Brunswick | Agilent Technologies | Neogen Corporation



E c o B I O S C I E N C E S

Certified
Service

43

Service
Package

45

Analytical
Excellence Center

46

Our
Customers

47



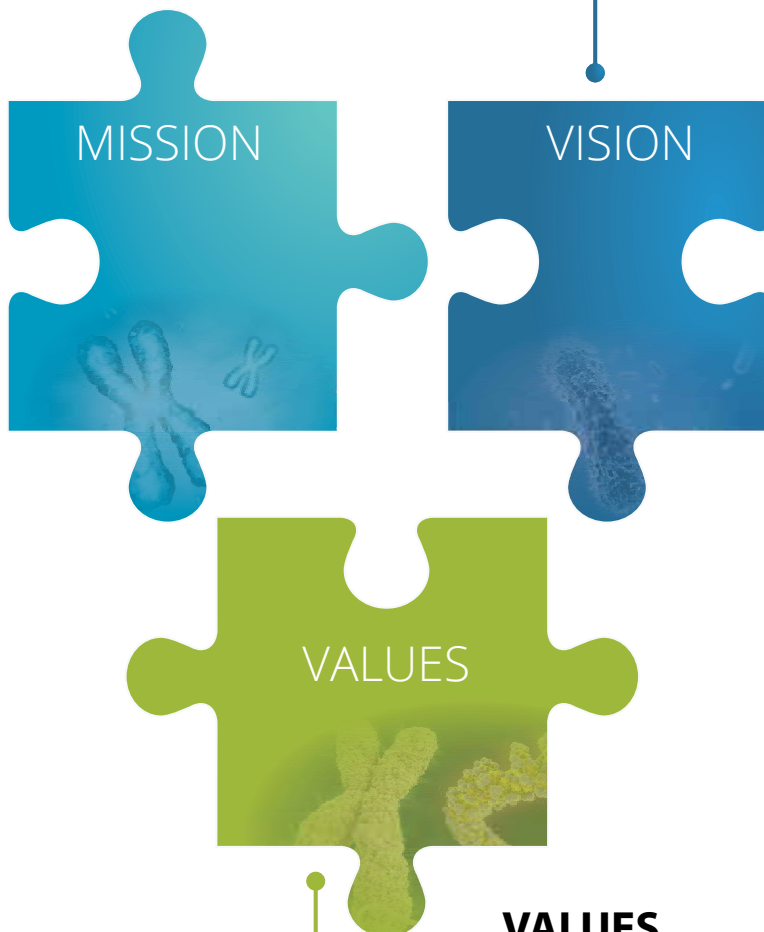
Our Mission, Vision & Values

MISSION

Our organization is driven towards a single goal: customer satisfaction. We at Eco Biosciences aim to ensure that our market leadership extends far beyond hardware, into turfs like customer loyalty, product diversity and the establishment of mutual trust between our customers, suppliers and employees. Our mission is not the quantitative growth of the company but to ensure that through our diversity, speed and quality we are able to bring about an improvement in the quality of life of society at large, by partnering with our customers to create economic opportunities.

VISION

We aspire to become a leading global and national enterprise in the life sciences industry and the partner of choice for laboratory devices and solutions.



VALUES

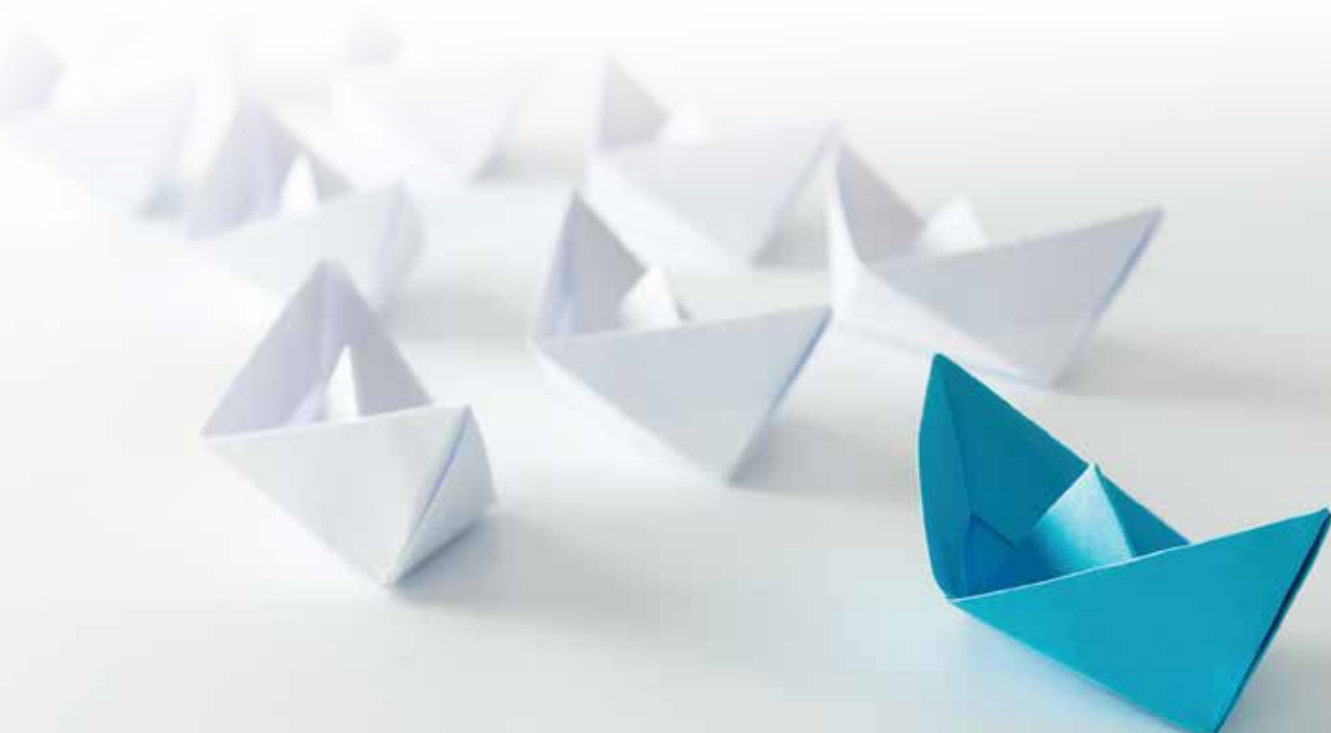
We perform with integrity at all levels and continue to ensure corporate excellence through innovation and focused quality conscious efforts in all our ventures. We strive to play our role as a good corporate citizen, by serving the people and society, for a better tomorrow.



Eco Biosciences was founded in 2007, with a passion for bringing intelligent and quality laboratory products to the hands of national scientists, and with the intent of catering to the life sciences industry of Pakistan as a service provider for commercial sample testing and distributor for global market leaders Eppendorf (Germany), New Brunswick (USA), Agilent Technologies (USA), and NEOGEN (USA).

Delivering laboratory products and sample testing results that give customers the control, insight and agility they need for a competitive advantage in a global landscape, Eco Biosciences aims to cultivate an entire culture of customer satisfaction at the very core of its operations through providing quality laboratory equipment with state-of-the-art software solutions to the research and diagnostics industry of the country. We also provide reliable and robust services and application support, because we at Eco Biosciences believe in "Customer-Delight" instead of "Customer-Satisfaction".

Streamlining analytical excellence, Eco Biosciences boasts a wide spectrum of high profile customers ranging from various market verticals, including but not limited to Universities, Public & Private R&D organizations, Clinical diagnostics Labs Treatment plants, Hospitals, Food Sector, DNA Forensics etc.



About Eppendorf

www.eppendorf.com

Eppendorf is a leading life science company that develops and sells instruments, consumables, and services for liquid, sample and cell handling in laboratories worldwide. Its product range includes pipettes and automated pipetting systems, dispensers, centrifuges, mixers, spectrometers, and DNA amplification equipment. Consumables such as PCR consumables, Cell culture consumables and tissue culture consumables complement the range of highest-quality premium products. Eppendorf products are most broadly used in academic and commercial research laboratories, e.g., in companies from the pharmaceutical and biotechnological as well as the chemical and food industries. They are also aimed at clinical and environmental analysis laboratories, forensics, and at industrial laboratories performing process analysis, production, and quality assurance.



New Brunswick
an eppendorf company

About New Brunswick

www.eppendorf.com

An Eppendorf company, New Brunswick Scientific has long been considered a vanguard in the rapidly evolving Life Science industry, with over a 60-year heritage of producing innovative and dependable equipment. New Brunswick is the worldwide market leader of biological shakers, offering a larger selection than any other manufacturer. A complete range of CO₂ incubators, shakers, ultra-low temperature freezers, cell culture and manipulation systems, bioreactors etc.





Agilent

Authorized
Distributor



About Agilent Genomics

www.agilent.com

Agilent Genomics is a global leader in target enrichment for next-generation sequencing and microarrays with innovative solutions for clinical research to genome engineering to precision measurement, we enable next generation, customizable solutions—so you can transform science and improve life. Agilent's singular focus on measurement helps scientists, researchers and engineers address their toughest challenges with precision and confidence. With the help of their products and services, they are better able to deliver the breakthroughs that make a measurable difference.



About Neogen Corporation

www.neogen.com

Neogen Europe Ltd, the European subsidiary of Neogen Corporation, is a high technology business dedicated to the development and marketing of novel diagnostic kits. These kits focus on topical concerns about the quality and safety of food and agricultural products, from the quality of seed that goes into the ground, right through the chain to the safety of fully processed food products. Neogen Europe Ltd is an R & D and production centre in its own right with a development pipeline of products for food safety and plant disease of particular relevance to the challenges faced by the European agri-foods industries.





Eppendorf Research plus

You want to easily and quickly fill a 96- or even 384-well microplate? With the lightweight Eppendorf Research plus multichannel pipettes you get a higher volume of precision work done. The unique spring loaded tip cone helps to load multi-channel tips quickly and securely without a need for rocking. Get extremely consistent sample pickup across all channels and maximize user to user reproducibility for more uniform results among members of the lab.



Eppendorf Reference® 2

You want to easily and quickly fill a 96- or even 384-well microplate? With the lightweight Eppendorf Research plus multichannel pipettes you get a higher volume of precision work done. The unique spring loaded tip cone helps to load multi-channel tips quickly and securely without a need for rocking. Get extremely consistent sample pickup across all channels and maximize user to user reproducibility for more uniform results among members of the lab.



Eppendorf Xplorer®/ Xplorer® plus

People who give 100 % every day deserve the best tools and the best laboratory equipment. You work on demanding problems, and important decisions depend on the results of your work. Your standard is extremely high and your performance is professional. With the Eppendorf Xplorer/ Xplorer plus electronic pipette, your work achieves a new level of simplicity, precision and reproducibility.



Multipette® M4

The Eppendorf Multipette M4 is the ideal precision instrument for completing long pipetting series. Even viscous or volatile liquids that are difficult to pipette are no match for the Multipette M4. The Combipips advanced® are made to complete the system. Hermetically sealed they offer a high level of safety for handling of infectious, toxic or radioactive liquids.



Multipette® E3/E3x

These electronic dispensers combine easy handling during dispensing with a broad range of features! The Multipette® E3x offers additional high-end applications, such as titration and aspirating of supernatant or sequential dilutions. In combination with the Combipips advanced®, it is an essential lab tool for all kind of liquid handling.



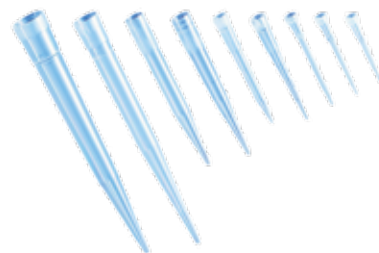
Easyjet® 3

Experience a new dimension of electronic pipetting with the Eppendorf Easyjet 3. The latest technological developments give you complete speed control with the utmost precision. The lightweight, well-balanced Easyjet 3 has been designed considering all ergonomic findings to fit comfortably in your hand and matches its shape to allow for fatigue-free pipetting.



epT.I.P.S.®

Want to easily and quickly fill a 96- or even 384-well micro For epT.I.P.S. – the original Eppendorf Totally Integrated Pipetting System – the tips are optimally coordinated to Eppendorf pipettes and, of course, meet EN ISO 8655 requirements. This has resulted in minimal attachment and ejection forces with the highest level of tightness. epT.I.P.S. Pipette tips can be used with pipettes from other manufacturers. Optimal wetting properties, high transparency and special, certified purity grades are the visible expression of our product and production philosophy.



ep Dualfilter T.I.P.S.® SealMax

ep Dualfilter T.I.P.S. filter tips are filter tips with a two-phase filter for contamination protection. The two filter layers made of flexible, hydrophobic material, fit perfectly in the tip cone and retain practically 100 % of all aerosols¹⁾ and biomolecules. This filtering effect is achieved using various, well-defined pore sizes. The layer facing the sample provides protection from drops, splashes and aerosols.



Eppendorf Combitips advanced®

The Eppendorf Combitips have been completely redesigned and optimized to meet the increased requirements of a modern laboratory to a greater extent than ever before. The result is the Combitips advanced®. As they offer a wide variety of advantages in comparison with the Combitips plus, we talk about the 360° Evolution! The Combitips advanced have replaced Combitips plus.



Eppendorf Serological Pipets

Eppendorf completes its portfolio in liquid handling with the new line of Eppendorf Serological Pipets. Experience the quality and convenience in liquid handling you have trusted in for decades with Eppendorf's system: Easypet 3 and Eppendorf Serological Pipets. Eppendorf's serological pipets are designed to work in perfect harmony with your Easypet 3.



Varispenser® 2/Varispenser® 2x

The new Varispenser 2 and Varispenser 2x are the ideal choice for dispensing aliquots of liquid from supply and reagent bottles. Advanced sealing lip technology enables dispensing of nearly all kinds of acids, solutions or bases. Available in 6 sizes for dispensing volumes from 0.2 – 100 mL, these instruments are designed to consistently dispense selected volumes without reagent waste. All Varispenser bottle top dispensers are fully autoclavable for maximum safety in your lab.



Eppendorf Top Buret™

The Eppendorf Top Buret sets standards for manual titration. With each turn of the dial, liquid is continuously dispensed. This eliminates the need for new liquid aspiration and makes titration simpler and safer. The Top Buret comes in two different models: Model M features a dispensing rate of 2,500 µL per rotation; Model H features a rate of 5,000 µL per rotation. The digital display readings on both models range from 10 µL to 999.9 mL with the size of your supply bottle being the only limiting factor.



Eppendorf ThermoMixer® C

You need everything? The Eppendorf ThermoMixer C combines excellent mixing performance with excellent temperature control to ensure complete, dependable and reproducible test results. Improve your assay results by mixing and incubating samples at the same time. The Eppendorf ThermoMixer C convinces users with its quick and easy-to-exchange SmartBlocks for all common lab vessels, new and improved program functions, and high level of stability for every mixing frequency.



Eppendorf ThermoStat™ C

Many experiments require fast heating and cooling steps in a very accurate manner. Precise temperature control is achieved for the ThermoStat C by using optimally balanced heating and cooling elements (peltier technology).



Eppendorf ThermoMixer® F

These products are the perfect choice for mixing and heating established routine applications. The Eppendorf ThermoMixer F0.5/F1.5/F2.0 and FP have a fixed block for 0.5/1.5/2.0 mL tubes and plates, respectively. Reliable prevention of condensate formation in small vessels can be achieved with the heated lid Eppendorf ThermoTop (optional).



MixMate®

Straight mixing required? Mix your samples in seconds, fully and reliably. Whether in plates (96 or 384-wells) or reaction tubes, your samples will be optimally processed. With the integrated ergonomic vortex function, the MixMate is your perfect lab assistant. The innovative additional 2 second run timer allows vortexing your next sample without restarting.



Eppendorf SmartBlock™

Using different vessel sizes within your lab work-flow? Flexibility has never been this easy. Eppendorf offers a broad range of Eppendorf SmartBlocks for tubes from 0.2 mL to 50 mL as well as plates (MTP, DWP, and PCR plates 96 / 384) to use with Eppendorf ThermoMixer® C and ThermoStat C. All Eppendorf SmartBlocks are equipped with the outstanding Eppendorf Quick Release system that makes the block exchange super fast and easy. Just press the lever on the front of the block and the block can be removed – no tools are needed, done in seconds.



Eppendorf ThermoTop®

Tired of condensation in your tubes? We combined the Eppendorf ThermoMixer® with the PCR cyclor approach of a heated lid and generated the Eppendorf ThermoTop. The outstanding Eppendorf condens. Protect® technology reliably prevents condensation within the tube lid – sample concentrations are consistent for the incubation time. In addition, the temperature homogeneity is further improved. Get optimal sample reaction conditions to produce optimal results.



IsoTherm-System®

Consists of an IsoRack (work rack), IsoSafe (insulating box), and two IsoPacks (cool packs), specializes in cooling samples effectively and consistently at -21°C or 0°C over many hours. Can be used to prevent enzymes from becoming inactive as well as for PCR sample preparation, sample transport and slow thawing of frozen samples. Dry incubation technology reduces contamination risk associated with classical ice bath incubation for safe sample handling



PCR-Cooler

Handling system for sample set-up, protection, transport, and storage of sensitive samples – keep you samples safe Clear temperature indicator: Color of PCR cooler changes when temperature exceeds 7°C Accommodates PCR-vessels as tubes, strips, or plates for flexible vessel usage Dry incubation technology reduces contamination risk of samples.



Exchangeable Thermoblocks

The exchangeable thermoblocks fit almost any lab tube format and allow maintaining accurate, uniform temperatures. For use with Eppendorf ThermoMixer® comfort (heating/ cooling/ mixing) and ThermoStat plus (heating/ cooling).



MiniSpin®/MiniSpin® plus

Powerful and user-friendly MiniSpin and MiniSpin plus are small enough so that each workstation can be equipped with a “personal” centrifuge. Two models are available to meet your performance requirements. MiniSpin plus provides speed sufficient for molecular biology separations. Additional rotor option for up to 2 x 8-tube PCR strips.



Centrifuge 5424 R

The refrigerated Centrifuge 5424 R is the laboratory standard when it comes to efficient cooling performance (e.g. quick cooling down from room temperature to set temperature) in a very ergonomic product design. It features state of the art cooling technology to ensure high temperature accuracy for maximum sample protection and best separation results. Ideal for everyday laboratory use.



Centrifuge 5430/5430 R

Unique cross-over Centrifuge 5430 and 5430 R combine the best features of a micro-centrifuge (small footprint) and multipurpose centrifuge (versatility) in one instrument. This includes 48-place rotors (1.5/2.0 mL), a 16-place rotor for Eppendorf Tubes® 5.0 mL and a swing-bucket rotor (24 x 1.5/2.0 mL). With their unmatched versatility, Centrifuge 5430 and Centrifuge 5430 R are the flagship products among the Eppendorf micro-centrifuge portfolio.



Centrifuge 5702/5702 R/5702 RH

The 5702 family of low speed, general purpose centrifuges was especially designed to meet the requirement of low-to mid-throughput research and cell culture labs. They are compact in design so that one can fit comfortably on every lab bench, quiet in operation to benefit your work environment, and provide 6 different rotor options to accommodate any type of tube.



Centrifuge 5804/5804 R

Centrifuge 5804/5804 R is a high speed centrifuge for medium capacity needs. It allows for molecular applications in tubes up to 250 mL and offers additional swing-bucket and fixed-angle rotors as well as deep-well plate capacity for increased versatility.



Centrifuge 5810/5810 R

Eppendorf Centrifuge 5810/5810 R with its renowned quality and reliability offers you the most cost efficient solution for your medium to high-throughput applications. With the new rotor generation the capacity of Centrifuge 5810/5810 R increases to max. 4 x 750 mL (or max. 28 x 50 mL/56 x 15 mL). It is the most compact 3 liter centrifuge currently available.



Rotors for MiniSpin/MiniSpin plus

Two rotors are available for MiniSpin and mini spin. F-45-12-11 and F-55-16-5-PCR with a capacity of 12 × 1.5/2.0 mL. Max. Speed of 12,100 × g and 14,100 × g respectively.



Rotors for Centrifuge 5424/5424 R

5424/5424 R rotors comes in four different options:
Rotor FA-45-24-11 (Max. Speed: 21,130 × g (15,000 rpm), Max. Capacity: 24 × 1.5/2.0 mL tubes.
Rotor FA-45-24-11-Special Max. Speed: 21,130 × g (15,000 rpm) Max. Capacity: 24 × 1.5/2.0 mL Tubes.
Rotor F-45-18-11-Kit Max. Speed: 18,111 × g (15,000 rpm), Max. Capacity: 18 × spin columns or 1.5/2.0 mL Tubes.
Rotor F-45-32-5-PCR Max. Speed: 18,615 × g (15,000 rpm) Max. Capacity: 4 × PCR strips



Rotors for Centrifuge 5430/5430 R

Rotor FA-45-48-11 Max. speed: 18,210 × g (12,700 rpm) Max. capacity: 48 × 1.5/2.0 mL tubes.
Rotor F-45-48-11 Max. speed: 18,210 × g (12,700 rpm) Max. capacity: 48 × 1.5/2.0 mL tubes.
Rotor S-24-11-AT Max. speed: 16,049 × g (12,700 rpm) Swing-bucket rotor for 24 × 1.5/2.0 mL tubes.
Rotor FA-45-16-17 Max. speed: 21,191 × g (14,200 rpm) Max. capacity: 16 × Eppendorf Tubes® 5.0 mL.
Rotor FA-45-30-11 Max. speed: 20,817 × g (14,000 rpm) Max. capacity: 30 × 1.5/2.0 mL tubes
Rotor FA-45-24-11-Kit Max. speed: 19,090 × g (13,200 rpm) Rotor with higher edge for safe centrifugation of up to 24 spin columns.
Rotor F-45-30-11 Max. speed: 20,817 × g (14,000 rpm) Max. capacity: 30 × 1.5/2.0 mL tubes.
Rotor FA-45-24-11-HS Max. speed: 30,130 × g (17,500 rpm) Max. capacity: 24 × 1.5/2.0 mL tubes.



Rotors for Centrifuge 5702/5702 R/5702 RH

Maximum speed: 3,000 × g (4,400 rpm) Standard rotor for centrifugation of blood collection tubes or 15/50 mL conical tubes Round buckets for vessels with 1.5 – 100 mL Wide variety of adapters for all blood collection tubes and cell culture tube types Aerosol-tight caps for safe centrifugation of hazardous samples optionally available.



Rotors for Centrifuge 5804/5804 R

Maximum speed: 2,750 × g (4,400 rpm) Rectangular buckets for vessels with 5 – 25 mL



Rotors for Centrifuge 5810/5810 R

Maximum speed: 2,750 × g (4,400 rpm) Rectangular buckets for vessels with 5 – 25 mL



Eppendorf BioPhotometer® D30

The Eppendorf BioPhotometer D30 is the 3rd generation of Eppendorf spectrophotometers to become an established standard in the life sciences. Routine pre-defined wavelengths are easily selectable, allowing for quick and simple programming. Users are guided through every step of the assay with short, simple on-screen instructions. The ultra-stable Xenon flash lamp doesn't require any warm up time and a measurement typically takes 5 seconds.



Eppendorf BioSpectrometer® basic

The Biospectrometer basic has freely selectable wavelengths from 200 – 830 nm (selectable in 1 nm increments). This allows the user to define the parameters of each assay, whether it be a scan, a single-wavelength measurement or a Multi-wavelength measurement. The Eppendorf BioSpectrometer basic caters to more disciplines as the wavelengths are not pre-defined and allows for non-routine assays or new assays to be easily programmed (in addition to the pre-programmed routine methods).



Eppendorf BioSpectrometer® kinetic

The Eppendorf BioSpectrometer kinetic is an expansion of the Eppendorf BioSpectrometer basic and offers preprogrammed and freely programmable timed and temperature controlled assays. It features an integrated heated cuvette shaft. Its integrated Peltier element guarantees high-precision for determining enzyme and substrate kinetics as well as other temperature-sensitive applications. Guided software is included; minimal effort is required to set up new assays. Retrospective modification of the time window for regression analysis can be made directly on the device. The BioSpectrometer kinetic replaces the traditional large cumbersome setup required for temperature controlled timed assays.



Eppendorf BioSpectrometer® fluorescence

The Eppendorf BioSpectrometer fluorescence is an expansion of the Eppendorf BioSpectrometer basic and features an integrated fluorescence module. UV/Vis assays, fluorescence assays and semi-micro/micro-volume measurements can all be carried out on a single instrument without the need for external control (PC/Laptop). Eppendorf BioSpectrometer fluorescence can be used to increase the measuring range for biomolecules (nucleic acids and proteins) by a factor of 1,000, compared to UV measurements. Pre-programmed (modified) methods for Qubit DNA quantification kits (SS, HS, BR) expand the flexibility and functionality of the instrument. Additionally, the use of the Eppendorf μ Cuvette G1.0 for fluorescence assays (5 μ L loading volume) allows for a vast reduction in reagent usage. assays or new assays to be easily programmed (in addition to the pre-programmed routine methods).



Eppendorf μ Cuvette® G1.0

The μ Cuvette G1.0 is in your range: Only 1.5 μ L of a sample is needed. The optical path length of only 1 mm enables a light path that is 10x shorter than the light path on standard cuvettes: Measure high nucleic acid and protein concentrations.



Thermal Printer DPU-S445

The Thermal Printer DPU-S445 is a thermal line dot printer with high printing speed while producing a clear type face. This allows the Thermal Printer DPU-S445 to print out scanned images. As an alternative to using USB sticks, the automatic print-out function of the DPU-S445 printer can be used to quickly obtain the results. Compatible with the BioPhotometer D30 and the BioSpectrometer product line.



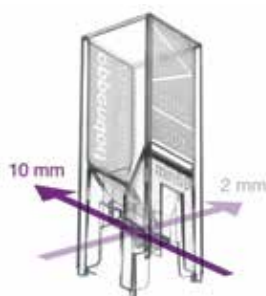
Eppendorf BioSpectrometer® Reference Filter Sets

The secondary UV/Vis Eppendorf BioSpectrometer Reference Filter Set is used to verify photometric accuracy and wavelength systematic error. For use with the BioSpectrometer basic and the BioSpectrometer kinetic.



Eppendorf BioSpectrometer® fluorescence Reference Filter Set

The Eppendorf BioSpectrometer Fluorescence Reference Filter Set: is used to verify photometric accuracy, wavelength systematic error, and fluorimetric precision (random error) and linearity on the Eppendorf BioSpectrometer fluorescence. For use with the BioSpectrometer fluorescence.



UVette®

The UVette is a disposable UV/Vis cuvette with a light transmission of 220 nm to 1,600 nm. As an example of Eppendorf's expertise in the production of high quality consumables, the UVette offers superb purity, convenience and precision for photometric analysis. The unique shape of the UVette combines two optical light path lengths to offer greater flexibility.



Eppendorf Vis Cuvettes

The Eppendorf Vis Cuvettes are disposable cuvettes made of clear plastic with a light transmission of 300 nm to 900 nm. These cuvettes are perfect for applications outside of the UV range, such as colorimetric protein assays (Bradford, Lowry, etc.), Determining of the optical density of bacterial cultures (OD600 methods), and kinetic and fluorescence measurements.



Mastercycler® X50

The Mastercycler X50 family boasts ramp rates of up to 10°C/s and is the ideal cycler family for routine applications as well as advanced research in molecular biology.

The Mastercycler X50 family consist of units with a user-friendly touchscreen interface or eco units which are externally controlled. Each cycler with a touchscreen can be networked with nine additional eco units. If that is not enough throughput, you can network up fifty Mastercycler eco units to a computer or laptop running CycleManager X50 as a central controller.

Whichever you choose, you can independently control and monitor every unit. You can also manage who has access to the system and designate a level of access with our intuitive user interface. Low noise levels, low power consumption, and the versatile flexlid® concept complete the product to be a powerful and convenient PCR cycler.



Simple, Central, Smart ...
Mastercycler X50 50x
with CycleManager X50 Software

CycleManager X50 Software

CycleManager Software - Simple, Central, Smart
CycleManager X50 allows control of up to fifty networked Mastercycler X50 eco units. Control can be individual, simultaneous, or grouped - Perfect for high-throughput standardized protocols where reproducibility is paramount.

Password protected user access is optional and users can be assigned different access rights, allowing greater documentation capabilities than ever before. It can also e-mail you when your PCR is complete!



Mastercycler® nexus

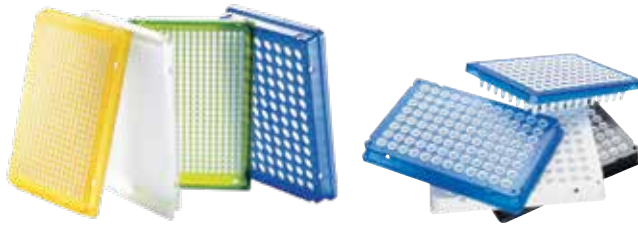
The Mastercycler Nexus PCR cycler provides scientists with flexibility in many forms. The 96 well aluminium block can accommodate several standard vessels types from 0.2ml tubes to 96 well plates, there is no need to buy additional blocks.

The silver block variants provide faster ramp rates than the aluminum blocks. Up to 2 eco cyclers can be connected to a programmable cycler and the configuration can also include the nexus X2 eco units, to provide a maximum of 6 independent blocks. The flexlid provides effortless height adjustment for different vessels. The Mastercycler Nexus cycler can even email you when the PCR run is complete - what else do you need from a PCR cycler?



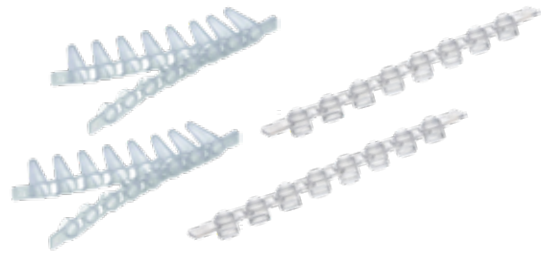
Mastercycler® nexus X2

The Mastercycler nexus X2 gives you the ability to run two totally independent protocols at the same time. Smaller assays fit nicely on the 32-well-block – larger assays can exceed 48 samples and run on the 64-well-block. The larger block is available with a gradient function. As every member of the Mastercycler nexus family, the Mastercycler nexus X2 can be combined with all other family members in a network of up to 3 units. In combination with Eppendorf's PCR Tubes, PCR Strips or divisible plates, the Mastercycler nexus X2 will give you consistent and publishable results – every day!



Eppendorf twin.tec® PCR Plates

Eppendorf twin.tec® PCR plates¹⁾ combine extremely thin walled polypropylene wells for optimal heat transfer to the sample and extremely robust polycarbonate frames for ultimate rigidity and torque-resistance. Twin.tec plates reduce the risk of cross contamination from their raised well rims for effective sealing.



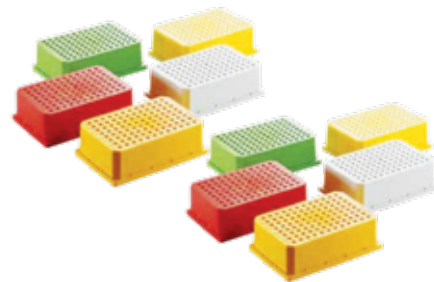
Cap Strips

Tight sealing, easy handling, optical transmission. Strips with eight micro-caps for 0.1 and 0.2 mL wells. Flat Cap Strips are suitable for real-time PCR.



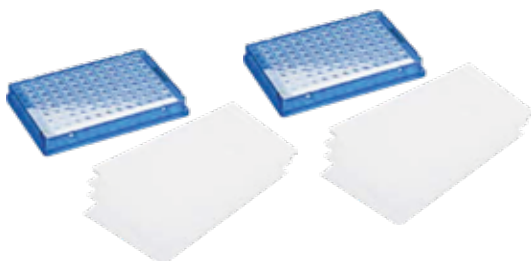
Eppendorf PCR Tubes

These thin-walled polypropylene tubes ensure efficient and homogeneous heat transfer. The purity grade PCR Clean is safeguarded by closed bags being inside an outer carton. Easy to open, but provide tight sealing to prevent evaporation in PCR. These tubes ensure efficient heat transfer to the sample.



PCR Rack

Rack for handling and storing tubes and plates For 0.1 mL, 0.2 mL and 0.5 mL tubes, as well as 96-well plates Stackable Can be stored down to -90 °C Autoclavable (121 °C, 20 min)



Heat Sealing Film and Heat Sealing Foil

Films and foils provide your PCR plate with a tight seal, particularly when heat-sealing material is used. Optically clear films, especially the Masterclear® real-time PCR Film with its superior optical characteristics, are the ideal sealing material of choice for qPCR and other optical assays.



HeatSealer

The HeatSealers S100 and S200 are user friendly instruments for reliable sealing of different plate formats. Our available set of adapters enables you to seal almost any plate. In order to obtain reliable assay results, plates need to be sealed tightly in a reproducible manner and the same is true for maintaining sample integrity during storage.



Eppendorf Eporator®

The Eppendorf Eporator is a compact instrument designed for fast and controlled electroporation of bacteria, yeasts and other microorganisms. The instrument features an intuitive operation and user-friendly programming of standard methods.

Experimental data can easily be exported and documented using its USB port.



Eppendorf TransferMan® 4r

Successful cell manipulation requires precision and fast sample processing. Eppendorf's new flagship micromanipulator, the TransferMan® 4r, is designed to ensure optimal results for any of your micromanipulation requirements. Together with our complete portfolio of cell manipulation products, it forms an ideal system to fully support your cell manipulation applications.



Eppendorf InjectMan® 4

Microinjection of cells is a highly versatile method to answer a wide range of biological questions. With its superior stability and comprehensive advanced functions, the Eppendorf InjectMan® 4 is the ideal tool for microinjection into adherent cells, smaller organisms and embryos in the early stages of development.



Eppendorf PiezoXpert®

Many cells require additional assistance for successful microinjection. Piezo-assisted injection methods can significantly increase productivity and enhance yields for a variety of micromanipulation applications. The Eppendorf PiezoXpert® ensures gentle and effective penetration of the cell membrane, thereby improving the outcome of your cell manipulation experiments.



FemtoJet® 4i and FemtoJet® 4x

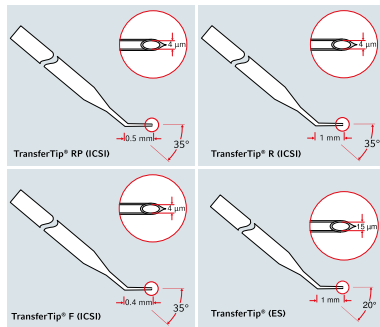
High-quality microinjection results require precision and reliability. Eppendorf's electronic microinjectors, the FemtoJet® 4i and FemtoJet 4x, are your tools of choice for reproducibly injecting small volumes into adherent cells and suspension cells.

In combination with the TransferMan® 4r or InjectMan® 4 they form an ideal system to facilitate and speed up your work-flow.



Microscope Adapters for Micromanipulation Systems

Flexibility gives you the freedom you need. With the help of the different microscope adapters, you can fit your Eppendorf cell manipulation solution to your microscope of choice. Eppendorf micromanipulation systems are compatible with most instruments of the major microscope manufacturers.



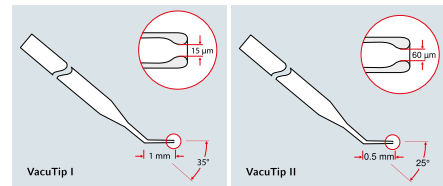
Cell Transfer Capillaries

TransferTip® RP, R and F (ICSI) Applications

- > Sperm transfer into oocytes.

TransferTip® (ES) Applications

- > Transfer of ES cells into mouse blastocyst or morula



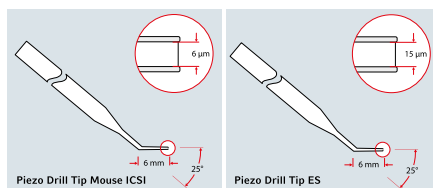
Holding Capillaries

VacuTip I Applications

- > For holding oocytes, blastocysts, etc.

VacuTip II Applications

- > For holding oocytes, blastocysts, etc.



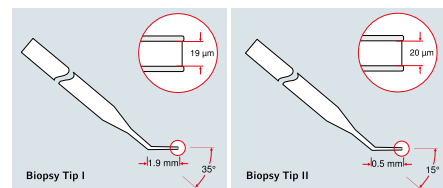
Capillaries for Piezo-assisted Cell Transfer

Piezo Drill Tip Mouse ICSI Applications

- > Piezo-assisted transfer of sperms into mouse oocytes

Piezo Drill Tip ES Applications

- > Piezo-assisted transfer of embryonic stem cells into blastocysts.



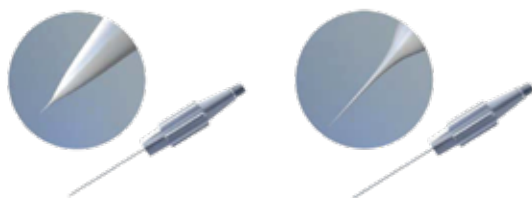
Biopsy Tips

Biopsy Tip I Applications

- > Laser-assisted biopsy of cells and organelles.

Biopsy Tip II Applications

- > Laser-assisted biopsy of cells and organelles.



Microinjection Capillaries

Femtotips® Applications

- > Injection into adherent cells
- > Near-surface injection into oocytes, early stage embryos and smaller organisms.

Femtotip II Applications

- > Injection into adherent cells
- > Deep injection into mammalian oocytes, early stage embryos (e.g. Zebrafish) and smaller organisms



Microloader™

Eppendorf Microloader™ Applications

- > Pipette tip for back-filling of Femtotips and other microcapillaries.



Eppendorf Cell Culture Plates

Keep your cells warm outside the incubator, avoid the edge effect and use more wells. Eppendorf Cell Culture Plates are designed for expansion of smaller cell numbers and for cell-based assays. The chimney-well design avoids inhomogeneous growth of cells in the outer ring of wells which reduces costs and increases efficiency. If cells need to spend more time outside of the incubator, filling the inter-well spaces of the plate will keep the temperature stable and prevent unwanted temperature shifts. We optimized the optical performance by enhancement of the planarity, material clarity, and reduction of the liquid meniscus to facilitate both manual and automated read-out.



Eppendorf Cell Culture Dishes

Whenever you need direct access to your cells, dishes are the format of choice. Eppendorf cell culture dishes were designed with a focus on improved handling and stacking performance to ensure a new level of safe and carefree usage. It all starts with the packaging: the innovative design can be easily opened without tools and resealed without tape. The bags are shrinkable for space-saving and safe storage of unused dishes. With the Eppendorf dishes, a corrugated handling ring provides safety in handling during transportation and expansion of cells. A SplashProtect™ ring inside the dish lid prevents spillage and traps fluid if condensation occurs. Combined with the outstanding, sturdy stacking, our cell culture dishes are unparalleled in their ease of transport and handling, safety, and convenience.



Eppendorf Cell Culture Flasks

Flasks are the preferred vessel for long term cultivation or large-scale expansion of cells, providing the best protection against contamination. Unsurpassed protection of your cells from contaminants was one of the key requirements in developing the Eppendorf Cell Culture Flasks. A new, high efficiency air filter technology combines excellent protection with reliable gas exchange. In-line pressure testing for each flask guarantees leakage-free flasks for maximum work-flow safety. The unique ConvexAccess™ shape of the neck facilitates the access to the growth area and makes cell seeding and media exchange much more convenient, safe, and reliable.



Eppendorf CCCadvanced® FN1 motifs

Tired of spending precious lab time coating vessels for your iPSC- or MSC-culture, sometimes even with unpredictable culturing results? How about a xeno-free or even better, a synthetic surface ready-to-use for fully defined conditions of your stem cell culture? Improve your experiments with the new CCCadvanced® FN1 motifs cultureware today. Get a sample, let us support you with transition and convince yourself.



Eppendorf Tube Racks and Eppendorf Cuvette Rack

Optimize your work-flows through user-friendly handling of clearly arranged samples. Eppendorf Tube Racks and Eppendorf Cuvette Racks are ideal for sample processing, transport, and short- to mid-term storage of samples.



Eppendorf Tubes® 3810X

The easy-open, easy-close design of the Eppendorf Tubes® 3810X provides convenient, ergonomic, and reliable one-handed operation. Whether sample preparation, centrifugation or storage – the Eppendorf Tubes® 3810X fit perfectly into your work-flows!



Eppendorf Safe-Lock Tubes

Eppendorf Safe-Lock Tubes are the result of 50 years of continuous improvement and development. The hinged Eppendorf Safe-Lock lid provides outstanding protection against unintentional opening during incubation and storage. Trust in the original Eppendorf Safe-Lock Tubes, because your samples deserve nothing but the best.



Eppendorf Tubes® 5.0 mL

Eppendorf Tubes 5.0 mL - the »missing link«! This product represents the perfect option for working with medium-sized sample volumes. It fills the gap between existing tube formats and enables the simple and safe processing of sample volumes up to 5.0 mL.



Eppendorf Conical Tubes 15 mL and 50 mL

The Eppendorf Conical Tubes 15 and 50 mL meet the highest demands of diverse laboratory applications. The outstanding quality and specifications make them ideally suited for cell biology applications as well as for sample preparation protocols in microbiology and molecular biology laboratories.



Eppendorf PCR Tubes

Since 1963, when Eppendorf invented the micro-centrifuge tube, Eppendorf tubes® have shown to be reliable companions for your daily work. The Eppendorf PCR Tubes are easy to open, but provide tight sealing to prevent evaporation in PCR. These tubes ensure efficient heat transfer to the sample, thanks to their thin, even wall thickness and smooth wall surface.



CryoCube® F740 series

The Eppendorf CryoCube® F740 series is the latest addition to the Eppendorf Freezer family. Combining the high-quality tradition of our previous freezers with an increased capacity, the CryoCube F740 is designed to store more of your samples securely while maintaining optimal energy usage. The integration of the PhysioCare Concept® during development means that the CryoCube F740 is easier and more comfortable to use, supports an ergonomic workspace, and enables an optimal work-flow in the lab.



CryoCube® F570 series

You want to reduce your energy costs but you need reliable sample cooling? The Eppendorf CryoCube F570 series of ULT freezers minimizes operating costs while providing superior protection for your critical samples. A combined insulation based on vacuum insulation panels and polyurethane foam enables extremely low energy consumption. The CryoCube F570h needs 14 % less energy than its predecessor.



Innova Family ULT Freezer

When it comes to maximizing sample storage capacity, Eppendorf Innova ULT Freezers set the standard. They take advantage of ultra-efficient, ultra-compact vacuum insulation panels which are used in combination with traditional insulation to slim down the freezer wall thickness from 130 mm to 80 mm. These models are ideal for labs short on space. Four models are offered: U535, U410 series, U360 and U101.



ULT Chest Freezers

You need a long-term storage location for your valuable samples? Eppendorf Ultra-Low Temperature (ULT) Chest Freezers combine high storage capacity with energy saving. As the freezer is accessed from the top, the cold air is kept in the freezer. Based on this, the samples are even safer than in a conventional upright freezer. Eppendorf offers different sizes/volume classes as chest ULT freezers.



Freezer Racks

Lost in boxes in your ULT freezer?
To make scientific life easier, we strongly recommend placing storage boxes within the ULT freezer in freezer racks. These metal racks enable optimal use of space as well as easy relocation of sample boxes.



Freezer Boxes Dividers

Sorting of vessels needed
The wax-coated cardboard dividers provide a low-cost alternative to injection molded boxes



Freezer Cardboard Storage Boxes

Looking for basic freezer storage boxes?
The white water-resistant cardboard boxes are optimal for organizing and safely storing your samples. White cardboard box with water resistant coating, designed to withstand ultra-low temperature



Eppendorf Storage Boxes

In need of housekeeping in your freezer?
The Eppendorf Storage Boxes provide safe storage for your sample tubes in a space-saving design. The extensive portfolio offers a selection for tubes from 0.5 mL to 50 mL.



TCA-3 Temperature Monitor

Receive email, voice-mail, and text alarms if the temperature exceeds desired levels for higher sample safety. Quick installation on any freezer regardless of manufacturer for flexible usage. View temperature data readings, graphs, and statistics from any web browser for flexible data access.
Temperature range is from -100 °C to 100 °C



CO₂ and LN₂ Back-up System

Equipped with a battery back-up to temporarily protect the contents of your freezer in case of power failure. Available in either liquid CO₂ and LN₂. Liquid CO₂ can maintain temperatures between -50 °C and -70 °C, where as LN₂ can go down to -85 °C. Both systems can be factory installed with your freezer order at no additional charge or retrofitted on location. Info: CO₂ and LN₂ are not interchangeable systems.

Cell Handling CO₂ Incubators



Galaxy® 48 R

The Galaxy 48 R CO₂ Incubator is a mid-sized, 48 liter incubator designed to optimize performance in applications that require a higher level of isolation and can be used in small labs. The 48 R series of incubators feature a large backlit display with on screen help menu, control and data logging of temperature, CO₂, door openings, alarms, and optional O₂ gas and humidity monitoring.



New Brunswick™ S41i

The New Brunswick S41i is the only CO₂ incubator with an Eppendorf shaker inside. The S41i precisely controls temperature, shaking speed, and CO₂, providing the ideal environment for growing mammalian and stem cells in culture. Accepts flasks up to 4 liters. Standard perforated shelf allows for static incubation at the same time as shaking and a second static shelf can be added as an option.



CellXpert® C170

Looking for a CO₂ incubator with a highly uniform atmosphere, fast recovery and effective contamination protection? A device that is easy to clean and use with a high useable volume to footprint ratio? Let us introduce CellXpert – a new family of Eppendorf CO₂ incubators and learn more about the CellXpert C170, the basic version of the C170i



CellXpert® C170i

Are you looking for a 170 L class CO₂ incubator that provides flexibility for the future, makes monitoring and documentation easy, and delivers optimized growth conditions, even for your sensitive cells? A CO₂ incubator that also saves money and is produced to the highest standards of quality? Let us introduce CellXpert – a new family of Eppendorf CO₂ incubators.

Cell Handling Incubator Shakers



New Brunswick™ S41i

The New Brunswick S41i is the only CO₂ incubator with an Eppendorf shaker inside. The S41i precisely controls temperature, shaking speed, and CO₂, providing the ideal environment for growing mammalian and stem cells in culture. Accepts flasks up to 4 liters.



New Brunswick™ Innova® 44/44R

The Innova 44 incubated and 44R incubated and refrigerated shakers are stackable solutions that provide very broad temperature capabilities for culturing a wide variety of organisms in flasks up to 5 L. Refrigeration module is built into the Innova 44R, or can be easily added to 44, at any time.



New Brunswick™ Innova® 43/43R

The Innova 43 incubated and Innova 43R incubated and refrigerated shakers are the perfect choice for handling large quantities or large volumes of cultures with precision and ease. The cast iron triple-eccentric counterbalanced drive is specifically designed to support high-speed applications and heavy workloads.



New Brunswick™ Innova® 42/42R

The Innova 42 incubated and 42R incubated and refrigerated shakers are our most versatile incubator shakers. The programmable Innova 42 and 42R provide exceptional convenience allowing you to simultaneously shake and static incubate cultures under the same conditions. Use on or under the bench, or double stacked for space savings.



New Brunswick™ Innova® 40/40R

The Innova 40 incubated and 40R incubated and refrigerated bench-top shakers provide years of dependable operation. The cast iron Eppendorf triple-eccentric counterbalanced drive is specifically designed to support high-speed applications and heavy workloads. Innova 40 incubated shakers provide very broad temperature capabilities for culturing a wide variety of organisms in flasks up to 3 L. A Refrigeration module is built into the Innova 40R.



New Brunswick™ Excella® E25/E25R

The large console Excella E25 incubated and Excella E25R incubated and refrigerated shakers accommodate test tubes or flasks up to 6 L in a tightly-sealed growth chamber featuring a large viewing window for easy viewing of samples. A wide variety of platforms, clamps and test tube racks provide for unlimited flexibility. The Excella models E25 and E25R offer field calibration of temperature and speed through the microprocessor-controlled touch pad.



New Brunswick™ Excella® E24/E24R

The benchtop Excella E24 incubated and model E24R incubated and refrigerated shakers accommodate test tubes or flasks up to 2.8 L in a tightly-sealed growth chamber featuring a clear acrylic lid for excellent visibility of all samples. A wide variety of platforms, clamps, and test tube racks provide for unlimited flexibility.



Innova® S44i

The new Innova S44i Biological Shaker is the next great addition to our renowned portfolio of life science solutions. Expand the potential of your lab and reap the benefits of the exceptional performance and reliability that come with every Eppendorf product.



New Brunswick™ Innova® 2350

On the bench, in an incubator or in a warm or cold room, the Innova Platform Shakers are the instrument of choice. Dependable operation is due in large part to the New Brunswick triple-eccentric counterbalanced drive. The Innova platform shaker model 2350 comes with additional stabilizing feet and/or counterweight to balance larger loads on an oversized platform. With a 36" × 24" platform that accepts up to 8 × 6 L Erlenmeyer flasks and offered in a 1" and 2" orbit, the Innova 2350 provides flexibility and dependability for your lab.



New Brunswick™ Innova® 2300

The New Brunswick triple-eccentric counterbalanced drive. The Innova platform shaker model 2300 offers a "quick-change" platform kit for frequent platform changes; enables snapping platforms in place without tools. With a 30" × 18" platform that accepts up to 4 × 6 L Erlenmeyer flasks and offered in a 1" and 2" orbit, the Innova 2300 provides flexibility and dependability for your lab.



New Brunswick™ Innova® 2150

The New Brunswick triple-eccentric counterbalanced drive. The Innova platform shaker model 2150 comes with additional stabilizing feet and/or counterweight to balance larger loads on an oversized platform. With a 24" × 18" platform that accepts up to 3 × 6 L Erlenmeyer flasks, the Innova 2150 provides flexibility and dependability for your lab.



New Brunswick™ Innova® 2100

The New Brunswick triple-eccentric counterbalanced drive. The Innova platform shaker model 2100 offers a "quick-change" platform kit for frequent platform changes; enables snapping platforms in place without tools. With a 18" × 18" platform which accepts up to 2 × 6 L Erlenmeyer flasks, the Innova 2100 provides flexibility and dependability for your lab.



New Brunswick™ Innova® 2050

The New Brunswick triple-eccentric counterbalanced drive. The Innova platform shaker model 2050 comes with additional stabilizing feet and counterweight to balance larger loads on an oversized platform. With a 16" × 12" platform which accepts up to 3 × 2 L Erlenmeyer flasks, the Innova 2050 provides flexibility and dependability for your lab.



New Brunswick™ Innova® 2000

The New Brunswick triple-eccentric counterbalanced drive. Other shaker manufacturers may offer triple-eccentric drives in their shakers. But only New Brunswick offers a broad-based cast-iron support mechanism properly sized to each shaker and specifically designed to support high-speed applications and heavy workloads. The Innova Open Air platform shakers are offered in 6 different sizes offering reliable, continuous-duty shaking of test tubes and flasks up to 6 liters.



4150 TapeStation System

The new Agilent 4150 TapeStation system complements the Agilent automated electrophoresis platforms with a new, compact, low-throughput instrument. Building on the success of the proven ScreenTape technology, it allows a quick, easy and reliable analysis of nucleic acids for up to 16 samples per run. This affordable, entry-level system is the ideal solution for the quality control (QC) of RNA and DNA samples in next-generation sequencing (NGS), microarray and qPCR work-flows.



4200 TapeStation System

The Agilent 4200 TapeStation system is an established automated electrophoresis tool for DNA and RNA sample quality control. The TapeStation system provides a complete solution for true end-to-end sample quality control within any next-generation sequencing (NGS) or Biobank work-flow. This covers the full DNA and RNA range and offers high levels of flexibility in a simplified work-flow with ready-to-use ScreenTapes.



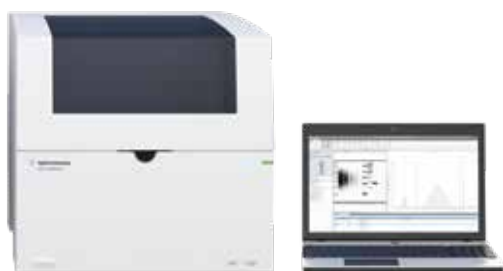
TapeStation Laptop

Standardize your data acquisition and analysis by using the Agilent validated TapeStation Laptop together with the TapeStation instrument. The laptop comes with the TapeStation Software and required drivers pre-installed and offers maximum convenience and security.



2200 TapeStation Parts & Accessories

Maximize the efficiency of your 2200 TapeStation system today with our genuine Agilent accessories. The portfolio features additional needle cartridges and TapeStation Test Tape. In addition, if running short on spare parts, extra loading tips are also available, along with 96-well sample plates and foil seals. For enhanced flexibility we also offer 8-well PCR optical tube strips and caps.



4200 TapeStation Parts & Accessories

Our portfolio of 4200 TapeStation spare parts and accessories features everything needed to keep your lab productive. Maximize the efficiency of your 4200 TapeStation system today with our genuine Agilent accessories.



TapeStation Software

Perform simple and intuitive data analysis with the TapeStation Software. With streamlined data acquisition and reporting, sample QC is made quick and easy. Sample concentration and sizing are automatically provided and sample integrity of DNA and RNA can be determined reproducibly by the DIN and RINe.



DNA ScreenTape Analysis

DNA ScreenTape analysis provides a fast, automated, and flexible DNA electrophoresis solution for sample quality control, in next-generation sequencing work-flows. The DNA ScreenTape assays can separate DNA fragments and libraries up to 5000 base pairs in 1-2 minutes/sample.



Genomic DNA ScreenTape Analysis

Genomic DNA ScreenTape analysis provides fast, automated and reliable electrophoretic separation of input genomic DNA samples. The gDNA ScreenTape assay can separate DNA samples from 200 to more than 60,000 base pairs in less than 2 minutes/sample. Samples can be analyzed from multiple sources including FFPE.



High Sensitivity DNA ScreenTape Analysis

The High Sensitivity DNA ScreenTape assays are suitable for analysis of precious samples. They can separate DNA fragments and libraries up to 5000 base pairs in 1 to 2 minutes per sample. Data output yields objective quantitative and purity measurements from only 2 μ L of sample.



High Sensitivity RNA ScreenTape Analysis

High Sensitivity RNA ScreenTape analysis provides efficient and reliable separation of total RNA samples of limited abundance down to 100 pg/ μ L. Compatible with eukaryotic and prokaryotic samples, the assay provides quality, quantity, and sizing information. Objective evaluation of RNA degradation is delivered with an RNA Integrity Number (RINe). Results are obtained quickly, as fast as 2 minutes per sample. Accurate analysis is possible with only 2 μ L of sample. Sources including FFPE.



RNA ScreenTape Analysis

RNA ScreenTape analysis provides efficient and reliable electrophoretic separation of total RNA down to 5 ng/ μ L. Compatible with eukaryotic and prokaryotic samples, the assay provides accurate information about sample integrity and quantity. Objective evaluation of RNA degradation is delivered with an RNA Integrity Number (RINe) that can be used for sample quality control in NGS work-flows.



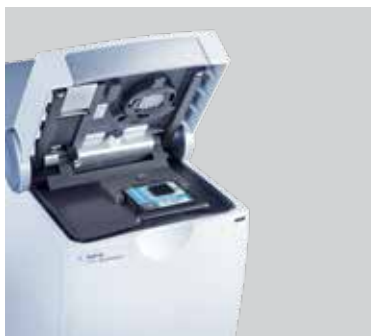
2100 Bioanalyzer Instrument

The 2100 Bioanalyzer system is an established automated electrophoresis tool for the sample quality control of biomolecules. The 2100 Bioanalyzer instrument, together with the 2100 Expert Software and Bioanalyzer assays, provide highly precise analytical evaluation of various samples types in many work-flows, including next generation sequencing (NGS), gene expression, biopharmaceutical, and gene editing research.



2100 Bioanalyzer Laptop

Ensure that your processes are optimized using the Agilent Bioanalyzer with a dedicated Bioanalyzer laptop. Available with Agilent's powerful and intuitive 2100 Expert Software pre-installed, the laptop brings added security and efficiency to your lab. The system verified and tested by Agilent is equipped with the necessary drivers to directly connect to the Bioanalyzer instrument enabling operators to standardize data acquisition and analysis processes.



Bioanalyzer Parts & Accessories

Maximize the efficiency of your Bioanalyzer system with genuine Agilent accessories and spare parts. Our extensive portfolio includes electrode cartridges and priming stations for high use labs running many Bioanalyzer assays.



Bioanalyzer Software 2100 Expert Security Pack

Elevate data analysis from GMP/GLP to 21 CFR Part 11 compliance with the 2100 Expert Security Pack as an add-on to the Bioanalyzer Expert Software. Additional user management, pre-validated methods, and access control help to comply with data security, integrity and traceability requirements mandated by FDA 21 CFR Part 11.



Bioanalyzer Software 2100 Expert Software

Sample integrity of RNA can be determined reproducibly using the widely-accepted standard, RNA Integrity Number (RIN). The software features powerful data evaluation tools for accurate smear analysis and the automatic and manual integration of samples. Many additional assay-specific tools are also included for customized performance.



Bioanalyzer DNA Analysis

Besides sample quality control of next-generation sequencing (NGS) libraries, additional research applications for the Bioanalyzer DNA assays include PCR amplicon analysis, multiplex PCR amplicons, gene expression analysis by RT-PCR, restriction fragment analysis, and the detection of targeted cleavage in gene editing studies.



Bioanalyzer High Sensitivity DNA Analysis

The High Sensitivity DNA assays are often used for sample quality control for next-generation sequencing libraries. In addition, PCR amplicon analysis, multiplex PCR amplicons, gene expression analysis by RT-PCR, restriction fragment analysis, and detection of targeted cleavage in gene editing studies may all be carried out. Accuracy is ensured with a broad linear dynamic range and normalization to internal markers and ladder.



Bioanalyzer High Sensitivity Protein Analysis

Perform high sensitivity protein electrophoresis with the 2100 Bioanalyzer System. The High Sensitivity Protein 250 assay provides a broad dynamic range with sensitivity down to Silver Stain comparable levels.



Bioanalyzer Protein Analysis

Protein electrophoresis using the 2100 Bioanalyzer System is a fast, automated, objective, and flexible solution for protein and peptide characterization, quality control, and impurity detection. The Agilent Protein 80 and Protein 230 assays provide sensitivity comparable to Coomassie Blue stains.



Bioanalyzer High Sensitivity RNA Analysis

The Bioanalyzer RNA 6000 pico assay provides reliable and reproducible characterization of total RNA and mRNA from multiple sample types, from as little as 50 pg of total RNA. The software provides an objective measurement of RNA quality with RIN (RNA Integrity Number). Validated RIN values are available for eukaryotic, prokaryotic, and plant samples.



Bioanalyzer RNA Analysis

The Bioanalyzer RNA 6000 Nano assay provides reliable and reproducible characterization of total RNA and mRNA from multiple sample types, from as low as 5ng of total RNA. The software will provide an objective measurement of RNA quality with RIN (RNA Integrity Number). Validated RIN values are available for eukaryotic, prokaryotic, and plant samples.



SureCycler 8800 Thermal Cycler

The SureCycler 8800 Thermal Cycler provides users with a complete package of market-leading features and functionality. This PCR machine can run even the most complex thermal cycling techniques including time and temperature increments, touchdown PCR, and temperature gradients.



RFLP Decoder Software

The Agilent DNA Fish ID solution uses advanced software to achieve more accurate results - quickly and easily. Key to the process is the Agilent 2100 Bioanalyzer and RFLP Decoder Software that performs RFLP pattern matching, eliminating the need for manual calling.

PCR Enzymes & Master Mixes



High Fidelity PCR Enzymes & Master Mixes

High Fidelity PCR Enzymes & Master Mixes.



Hot Start PCR Enzymes & Master Mixes

Hot Start PCR Enzymes & Master Mixes.



Routine PCR Enzymes & Master Mixes

Routine PCR Enzymes & Master Mixes.



Transcription Enzymes

A DNA-dependent RNA polymerase with high sequence specificity for SP6 promoter sequences.



Cloning Kits

- > PCR Polishing Kit
- > StrataClone PCR Cloning Kits
- > SureVector



PCR Inhibitors

- > DNase I, RNase Free
- > RNase-IT Ribonuclease Cocktail
- > RNase Block



PCR Polymerases & Reagents

- > Klenow
- > Nucleotides & Buffers
- > Perfect Match PCR Enhancer
- > Taq Extender PCR Additive



PCR-Based Specialty Kits & Reagents

- > MycoSensor Assay Kits
- > SureDirect Blood PCR Kit

PCR Nucleic Acid Purification & Isolation Kits



Absolutely Total RNA FFPE Purification Kits

Our Absolutely Total RNA FFPE Purification Kits offer a fast, simple and reliable method for isolating quality RNA from formalin-fixed paraffin-embedded (FFPE) tissue sections. The kits provide a safe and efficient approach that is phenol-free and non-toxic.



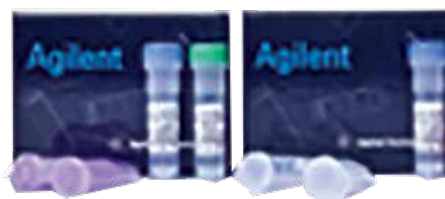
Absolutely Total RNA Purification Kits

Absolutely total RNA kit offers Nano, Micro, Mini, and 96-well Prep formats. Absolutely RNA miRNA produces high yields of pure miRNA-containing total RNA. Absolutely FFPE kit provides a non-toxic method for isolating quality RNA from paraffin embedded tissue sections.



Genomic DNA Isolation

Recover Ease DNA Isolation Kit quickly isolates and recovers high-molecular-weight (100 to 500 kb) genomic DNA from a variety of whole tissues - liver, spleen, kidney, brain, testes - without hazardous organic solvent extractions or ethanol precipitation.



StrataPrep DNA Gel Extraction Kits

StrataPrep DNA Gel Extraction Kits allow rapid, high-yield isolation of pure DNA from agarose gels. The DNA extraction solution is added directly to the gel slice of interest and then transferred to the unique microspin cup.



StrataPrep PCR Purification Kits

The StrataPrep PCR purification kits provide a rapid method to simultaneously purify PCR products from PCR primers, unincorporated nucleotides, buffer components, and enzymes.



StrataPrep Plasmid Miniprep Kits

Each StrataPrep Plasmid Miniprep Kit is optimized for a specific application for high-efficiency purification. Purified DNA is application-ready in minutes, with no need for aliquoting messy slurries, extracting with phenol, or concentrating the DNA via alcohol precipitations.

PCR Reference and Controls help you get better results



DNA Fish ID Kits

Identify fish species quickly, easily, and accurately. Whether your samples are fresh, frozen, dried, salted, or minced, Agilent's DNA Fish Species Identification solution provides reliable, robust answers within hours. And, the method is far more accurate than looking at a fish and guessing.



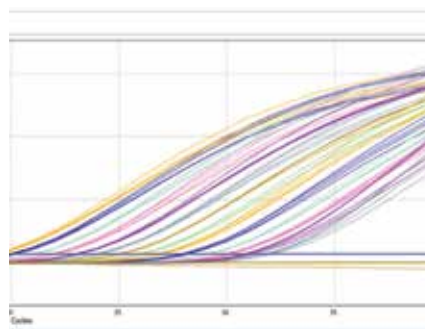
Kb DNA Ladder

The Supercoiled DNA Ladder contains fragments from 2 kb to 10 kb at 1-kb increments and an additional band at 12 kb. The Kb DNA Ladder contains fragments from 1 kb to 10 kb at 1-kb increments, as well as bands at 250 bp, 500 bp, 750 bp, 1500 bp and 12 kb.



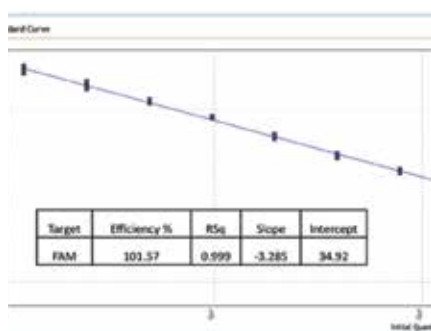
AriaMx Real-time PCR System

The AriaMx Real-Time PCR system is a fully integrated qPCR solution for amplification, detection, and data analysis, combining a novel thermal cycler, an advanced optical system with LED excitation source, and comprehensive data analysis software.



Real Time PCR (qPCR) Software

Advanced, yet easy-to-use AriaMx Electronic Tracking (ET) qPCR software, with proprietary algorithms accompanies AriaMx's precision chemistry and thermocycling capabilities. The new ET version showcases secure application login, database file management, electronic audit trail, and report generation.



AriaMx HRM qPCR Software

The AriaMx HRM QPCR Software uses fast scanning capabilities and an algorithm that interpolates the maximum T_m peak value instead of the highest melt peak value. This ensures that the system can gain accurate HRM results from a single scan. It is also possible to save and re-use existing experiment setups.

Real-Time PCR (qPCR) Enzymes



Easy-A One-Tube RT-PCR Kit

The Agilent Easy-A One-Tube RT-PCR Kit enables the fast and accurate use of Easy-A high-fidelity cloning enzymes in many research applications. Easy-A enzymes combine the superior accuracy of proofreading enzymes with the high cloning efficiency of Taq.



Reverse Transcriptases

AccuScript high-fidelity reverse transcriptase delivers the highest RT accuracy currently available. Achieve high cDNA yields for RT and RT-PCR over a broad temperature range. Improve the speed, efficiency and consistency of single-tube RT-PCR processes



qPCR-Based Specialty Kits & Reagents

- > miRNA qPCR Detection Reagents
- > MycoSensor qPCR Assay Kits
 - > Porcine Detection Kit
- > qPCR NGS Library Quantification Kit



qPCR-Based Specialty Kits & Reagents

- > SideStep II Cell Lysis Analysis Kit
- > SideStep Lysis & Stabilization Buffer
- > SideStep mRNA Enrichment Kit

Real-Time PCR (qPCR) Master Mixes



Brilliant HRM Ultra-Fast Loci Master Mix

Brilliant HRM ultra-fast Loci master mix is a platform-independent mix for high-resolution melt (HRM) analysis.



Brilliant II Probe MM

Improved detection sensitivity, plus reproducible quantification even at low target concentrations.



Brilliant II Probe MM with ROX

Brilliant II qPCR and qRT-PCR reagents maintain the quality of our original Brilliant product line.



Brilliant II SYBR MM

Improved detection sensitivity, with replicate reproducibility even at low target concentrations.



Brilliant II SYBR MM with ROX

Brilliant II SYBR qPCR and QRT-PCR reagents ensure reproducibility at low target concentrations.



Brilliant III Probe MM

Brilliant III qPCR and QRT-PCR Master Mixes are perfect for researchers who want their data faster.



Brilliant III Probe MM with ROX

Brilliant III qPCR Master Mixes with low/high ROX improve overall sensitivity and speed.



Brilliant III SYBR MM

Brilliant III ultrafast SYBR qPCR and qRT-PCR Master Mixes provide specificity by utilizing a novel faster-activating hot start method. Minimizes the formation of primer-dimers and other off-target reactions. These reagents are robust and reproducible across many assays on fast cycling real-time platforms.



Brilliant Probe Multiplex MM

The Brilliant Multiplex qPCR Master Mix allows four-target amplification in one real-time PCR run.



High-specificity miRNA qRT-PCR Detection

Our miRNA qRT-PCR detection system enables accurate and real-time PCR quantification for miRNA. The kit is a high-specificity reagent system that delivers sensitive and reproducible results. The kit elongates miRNAs in a polyadenylation reaction and then reverse transcribes the polyadenylated RNA into QPCR-ready cDNA.



SideStep II QRT-PCR Master Mix

Significantly reduce the cost and time of RNA column purification through improved sample screening.



Aria Real-Time PCR Optical Cartridges

The Aria Real-Time PCR System is a fully integrated quantitative PCR amplification, detection, and data analysis system. The system design combines a state-of-the-art thermal cycler, an advanced optical system with an LED excitation source, and complete data analysis software. The instrument can hold up to six optical cartridges, and the scanning optics design delivers optimal separation between the dyes and between samples.

Real-Time PCR (qPCR) Starter Kits



AriaMx qRT-PCR Starter Pack

The AriaMx qRT-PCR Starter Pack provides supplies for many Agilent cDNA synthesis products.



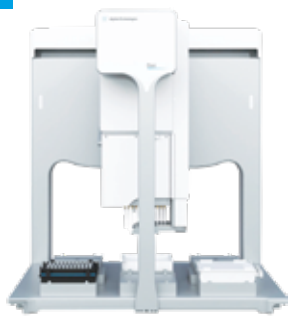
AriaMx SYBR Green Starter Pack

The AriaMx SYBR Green Starter Pack provides supplies for many Agilent cDNA synthesis products.



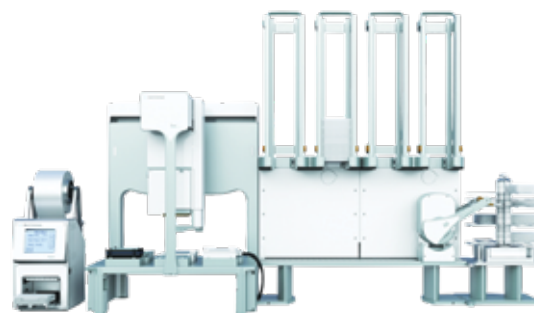
Brilliant HRM Ultra fast Starter Pack

The Brilliant HRM Ultra fast Starter Pack is part of Agilent's qPCR plastics and accessories, providing starter packs and accessories for many Agilent cDNA synthesis kits and products. These kits contain supplies and tools to kickstart your initial high resolution melt analysis (HRM).



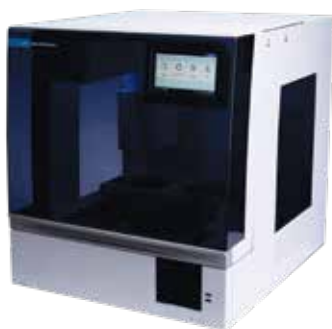
Bravo NGS (Option A)

The Bravo NGS (Option A) offers the advantage of increasing throughput without affecting data quality and freeing up researchers from performing time consuming and repetitive tasks. The compact design of the Bravo liquid handling platform makes it an excellent choice for labs with space constraints.



NGS Workstation (Option B)

The NGS Workstation (Option B) offers the advantage of increasing throughput without affecting data quality and freeing up researchers from performing time consuming and repetitive tasks. With plate and tip handling solutions, the workstation also enables walk away automation so researchers can get time for valuable tasks.



Magnis NGS Prep System

The Magnis system provides a complete system for NGS library preparation that is fully automated and delivers reproducible results, making it easy to assay multiple genes and complex genetic aberrations from genomic DNA including degraded samples such as formalin-fixed paraffin embedded (FFPE).



NGS Software

- > AGeNT
- > SureCall
- > SureDesign

NGS DNA-Seq Reagent Kits & Library Preparation Kits



SureSelect DNA-Seq products

- > SureSelect Ion Proton
- > SureSelectQXT Library Prep for WGS
- > SureSelectQXT Reagent Kits
- > SureSelectXT HS Reagent Kits



SureSelect DNA-Seq products

- > SureSelectXT Low Input Reagent Kits
- > SureSelectXT Methyl-Seq Library Preparation Kit for targeted methylation sequencing
- > SureSelectXT Reagent Kits
- > SureSelectXT2 Reagent Kits



NGS Exome Probes

- > SureSelect Clinical Research Exome V2
- > SureSelect Focused Exome



NGS Exome Probes

- > SureSelect Human All Exon
- > SureSelect non-human Exomes

NGS Catalog Target Enrichment Probes



Enrichment Panels

- > ClearSeq Comprehensive Cancer
- > ClearSeq Inherited Disease Panel
- > ClearSeq RNA Kinome



Enrichment Panels

- > OneSeq Constitutional Research Panel
- > SureSelect Community Panels
- > SureSelectXT Methyl-Seq Capture Panels

NGS Quality Control



Human Reference DNA

OneSeq Human Reference DNA for DNA sample target enrichment is well-characterized and ready-to-use.



Enrichment Panels

A formalin-fixed, paraffin-embedded tissue QC Kit for molecular cancer research applications.



SureSelect Strand-Specific RNA Library Preparation for Whole-Transcriptome Sequencing

Libraries are generated from as little as 50 ng of RNA in just 5 hours with minimal hands on time. These libraries maintain strand specificity while generating high complexity sequencing libraries with limited 5' to 3' transcript coverage bias. Libraries are compatible with Illumina sequencers.



SureSelectXT RNA Direct Library Preparation Kit for Targeted RNA-Sequencing

This kit is optimized to work with highly degraded RNA (ex: FFPE), doesn't require Poly(A) enrichment or rRNA depletion, and has a streamlined work-flow. Libraries are compatible with Illumina sequencers. SureSelect RNA Target Enrichment probes are fully customizable.

Methylation & ChIP on Chip Microarray Platform



SureScan Microarray Scanner

The Agilent SureScan Scanner provides a precise and efficient microarray scanner system for many research applications. Designed for research using microarrays, the scanner system provides a laser-induced fluorescence scanning solution designed to read microarrays printed on standard 1 inch by 3 inch glass slides.

The microarray instrumentation measures the fluorescence intensity of two dyes simultaneously from labeled sample nucleic acid bound to microarrays. The system also enhances productivity with continuous loading from a 24-slide cassette and automatic loading of data files into Feature Extraction Software. It also features built-in ozone protection to minimize signal degradation.



G2565 Series Microarray Scanner Accessories

We provide a portfolio of genuine accessories for the Agilent G2565 Series Microarray Scanner. This includes additional slide holders for the Agilent DNA Microarray Scanner CA and BA. These are provided in boxes of five holders and help analysts expand their capabilities in a range of applications.

In addition, we also offer a 48-position scanner carousel base and cover for the Agilent DNA Microarray Scanner AA and Scanner BA. An ozone-barrier slide cover kit, with 25 covers, is also available for added protection, and we provide personal computer hardware for optimized scanning performance.



ChIP-on-chip Microarrays

- > C. elegans ChIP-on-chip Microarrays
- > Drosophila ChIP-on-chip Microarrays
- > Human ENCODE ChIP-on-chip Microarrays
 - > Human Promoter Microarrays
 - > Mouse Promoter Microarrays
- > S. pombe ChIP-on-chip Microarrays
- > Yeast ChIP-on-chip Microarrays
- > Zebrafish ChIP-on-chip Microarrays



Custom Microarrays

- > Custom ChIP-on-chip & Methylation DNA Microarrays



DNA Methylation Microarrays

- > Human CpG Island Microarray
- > Human DNA Methylation Microarrays
- > Mouse CpG Island Microarray

Epigenetic & Specialty Microarray Kits & Reagents



Microarray Kits & Reagents for Streamlined Work-flows

- > Cot-1 Human DNA
- > Oligo aCGH/ChIP-on-chip Hybridization Kit



Microarray Kits & Reagents for Streamlined Work-flows

- > SureTag Labeling Kits
- > SureTag Purification Columns

Neogen's Forensic Toxicology Advantages

- > Detectability of more than 300 drugs and drug metabolites
 - > More than 100 drug test kits available
 - > Excellent reproducibility
 - > High Sensitivity

Neogen's Forensic Toxicology Advantages

- > Automated and semi-automate equipment packages
 - > Custom single-line reporting software
 - > 30 year of ELISA experience
 - > Reagent rental programs

Test Kits by Drug Panel

- > Anabolic Steroids/beta-agonists
- > Hallucinogens and anesthetics
- > Antidepressants/sedatives
 - > Narcotic analgesics
- > Anti-inflammatories
 - > Antipsychotics
- > Designer Drugs
 - > Stimulants

Validation for Forensic Matrices

- > Oral fluid (saliva)
- > Whole Blood
- > Meconium
- > Plasma
- > Serum
- > Urine
- > Hair
- > Others



ECO BIOSCIENCES CERTIFIED SERVICE WORKING FOR YOU

When you purchase your instrument from Eco Biosciences, you choose a high quality product that you rely upon for its accuracy and stability. Given the proper care, your instrument should provide years of reliable operation. Eco Biosciences has several service programs designed to meet your needs. From the recommended preventive maintenance programs to repair coverage and emergency service, Eco Biosciences will ensure you get the most out of your investment.

Our service engineers and application microbiologists are fully equipped to provide immediate on-location backup services to our customers. Similarly, the after sales services personnel of Eco Biosciences are fully trained to not only intervene for preventive or remedial maintenance on all laboratory equipment, but also for installation and training needs.

Benefits



- > **Certified test equipment**
- > **Easy-to-plan maintenance budgets**
- > **Ensure a long instrument working life**



- > **Have access to our team of highly qualified engineers**
- > **Keep your results on-spec**
- > **Rapid response for repairs**



- > **Documented services: service and maintenance record**
- > **For any query please contact us at +92 51 234 8515 (-9)**



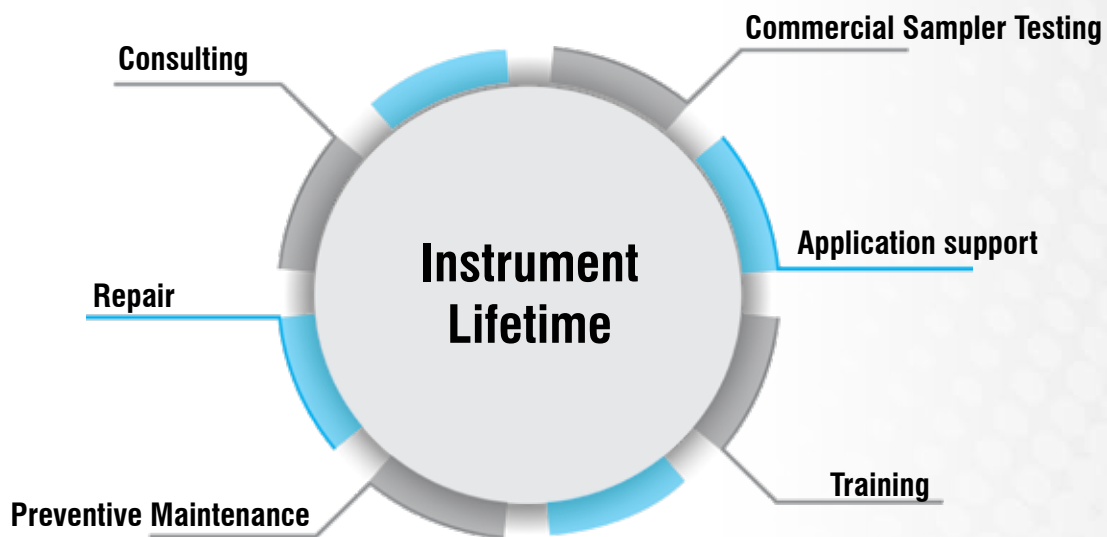
ECO BIOSCIENCES OTHER SERVICES WE OFFER

To meet the growing demand for professional and qualified technical services, Technical Service Department has a team of highly qualified and skilled service professionals with a wide-ranging expertise in installation, configuration and commissioning. Our staff is fully trained and equipped to meet the service requirements of our clients.

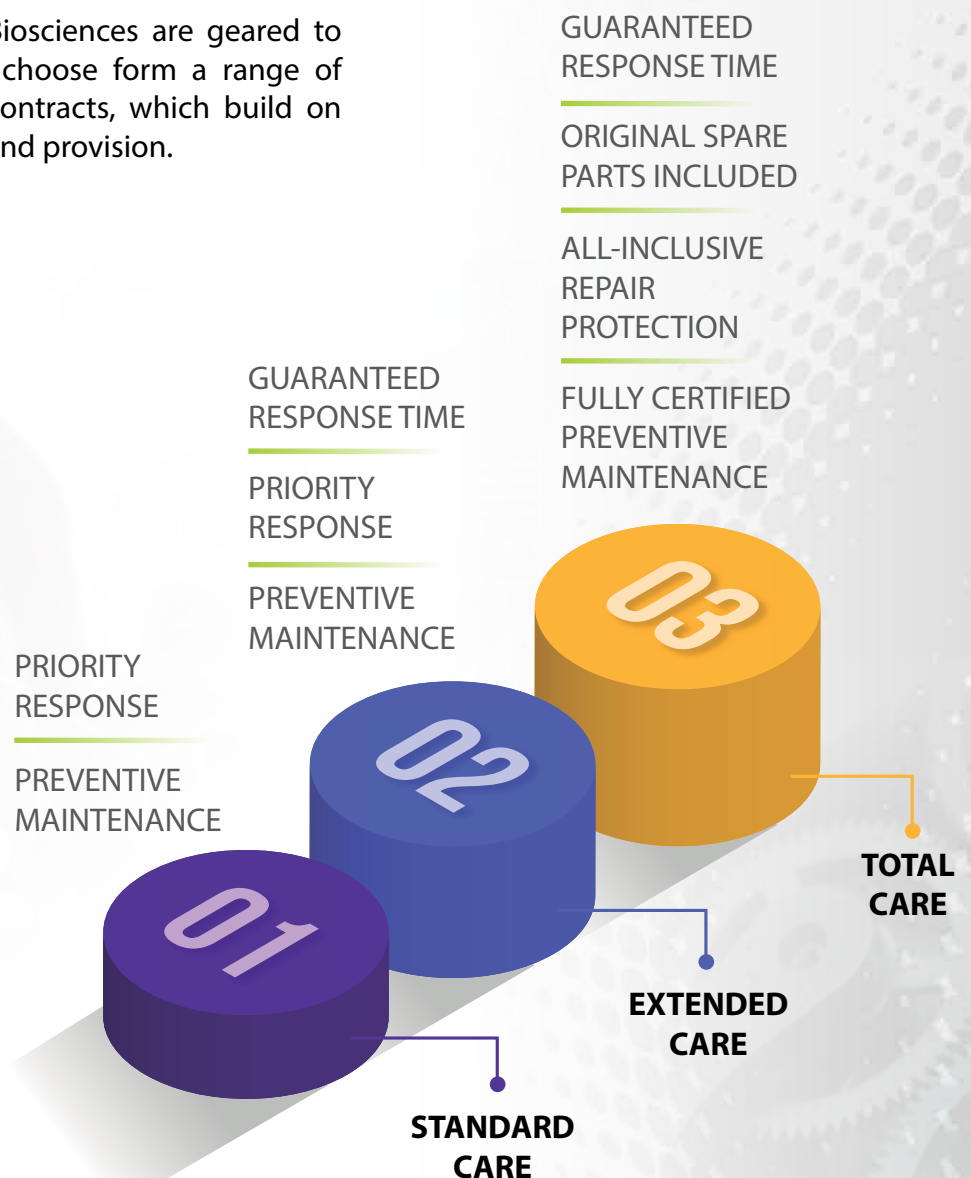
Eco Biosciences proposes annual contracts with the objective of reducing or even eliminating the need for remedial interventions which are frequently penalizing for a laboratory. Excellent results under testing conditions have allowed us to establish a dynamic and efficient service structure. Our service engineers and application chemists are fully equipped to provide immediate on-location backup services to our customers. Similarly, the after sales services personnel are fully trained to not only intervene for preventive or remedial maintenance on all laboratory equipment, but also for installation and training needs.

Other Services

- **Warranty Service**
 - **Application Support**
 - **System Configuration**
 - **Repair & Maintenance**
- **Installation & Commissioning**
 - **Annual Maintenance Contracts**
 - **Customer Seminars & Trainings**



The Services offered by Eco Biosciences are geared to your requirements. You can choose from a range of three Annual Maintenance Contracts, which build on each other in terms of scope and provision.





A Platform Where Our Foreign-Trained Experts Share Their Best Application Skills & Knowledge

- Cell Culture
- Next Generation Sequencing
- Microbiology
- Bioprocessing
- Stem Cells
- Biochemistry
- Automated Electrophoresis
- Real-Time PCR (qPCR)
- Forensic Toxicology
- Forensic DNA typing
- Verification of foreign DNA
- Flow Cytometry



Our Customers



Pakistan Agricultural Research
Council, Islamabad



Armed Forces Institute of
Pathology, Rawalpindi



National Institute of Health
(NIH), Islamabad



Shaukat Khanum Memorial
Cancer Hospital & Research
Center



THE AGA KHAN UNIVERSITY

Aga Khan University &
Hospital , Karachi



SGS Pakistan (Pvt) Ltd.



University of the
Punjab, Lahore



COMSATS Institute of
Information Technology ,
Islamabad and Abbottabad



National Forensics Science
Agency Pakistan



NARC , Islamabad



World Health Organization



Punjab Forensic Science
Agency



Our Customers



National Institute of
Biotechnology & Genetic
Engineering (NIBGE) ,
Faisalabad



Pakistan Council of Scientific
& Industrial Research (PCSIR)
LABORATORIES COMPLEX



Shifa International
Hospital, Islamabad



Baha Uddin Zikria
University, Multan



University of Karachi



LUMS School of Sciences and
Engineering , Lahore



Central Cotton Research
Institute Multan



Institute of Biomedical &
Genetic Engineering ,
Islamabad



Government College
University, Lahore



Quaid e Azam University,
Islamabad



University of Veterinary
& Animal Sciences,
Lahore



Excel Labs (Pvt) Ltd,
Islamabad

Our Customers



Army Medical College ,
Rawalpindi



Engro Fertilizers Ltd.



Punjab AIDS Control Program



National Centre of
Excellence in Molecular
Biology ,Lahore



University of Health
Sciences, Lahore



Sindh Institute of Urology and
Transplantation



Sir Ganga Ram Hospital



National Center of
Excellence in Analytical
Chemistry University of
Sindh , Jamshoro



PMAS Arid Agriculture
University , Rawalpindi



Punjab Thalassemia
Prevention Program



Quaid-e-Azam
International Hospital,
Islamabad



National University of
Sciences and Technology
(NUST) , Islamabad



Our Customers



Intertek Pakistan Karachi



The Islamia University of
Bahawalpur



King Edward Medical
University



LIFE, Lahore Institute of
Fertility and Endocrinology



American Embassy, Islamabad



The Legend Leads...

English Biscuit
Manufacturers



FORMAN CHRISTIAN COLLEGE

Forman Christian
College University



Shaheed Zulfiqar Ali Bhutto
Institute of Science and
Technology University Karachi



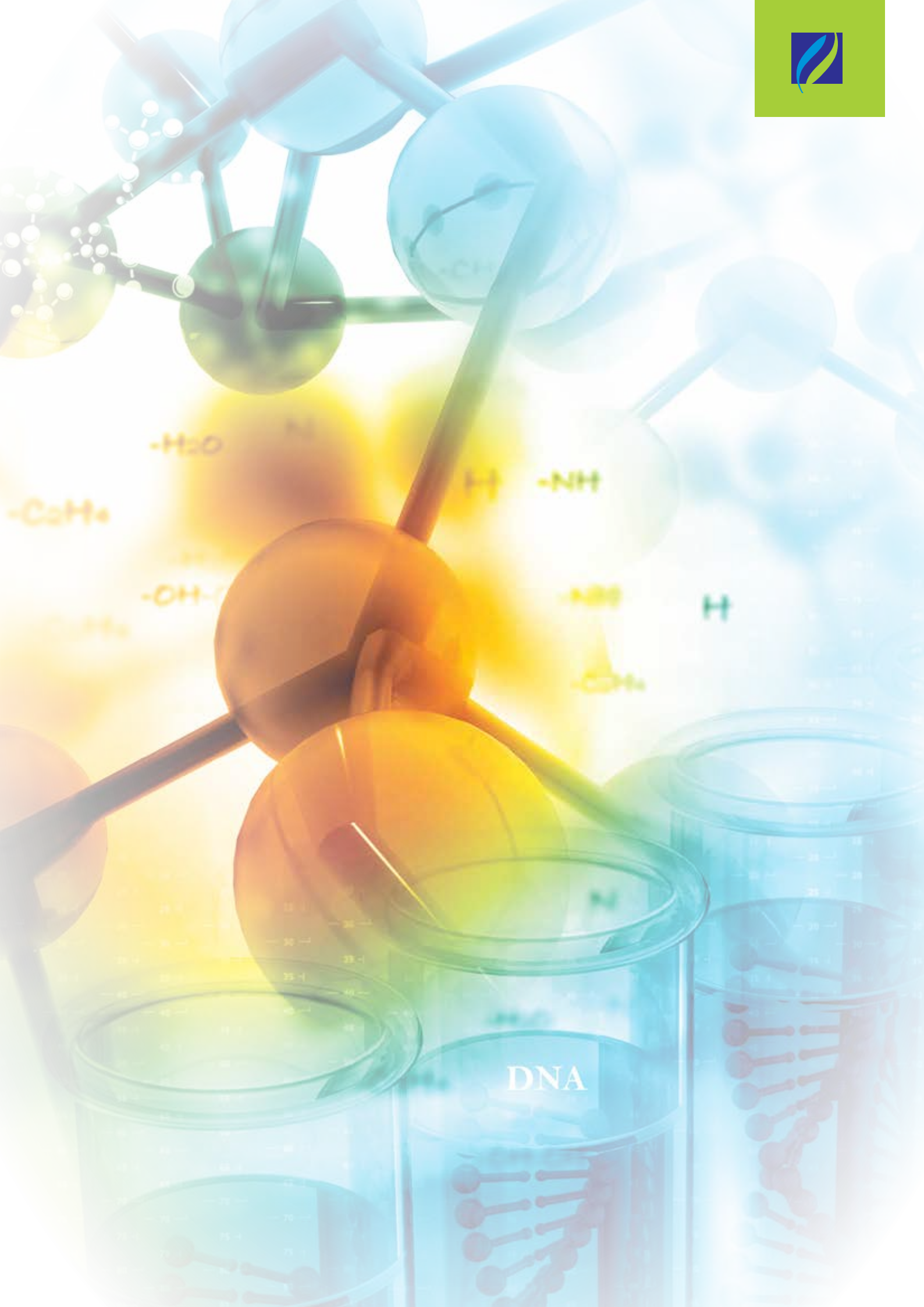
Indus Hospital



National Center For
Proteomic (NCP).



Nestle Pakistan Limited



DNA



Islamabad



1st Floor, 109 W Sardar Begum Plaza Jinnah Avenue, Blue Area



+92 51 234 8516 (-9)



+92 51 234 8520

Lahore

6th Floor, 612, 89-B/III Al-Hafeez Business Center, Gulberg-III,

+92 42 3571 2147 (-8)

+92 42 3587 9284

Karachi

#20-F/2, Block-6, P.E.C.H.S

+92 21 3452 5777
+92 21 3452 5753

+92 21 3452 5710

Peshawar

UG-457, Deans Trade Centre

+92 91 525 3031

+92 91 525 3031



www.ecobiosciences.com



info@ecobiosciences.com



facebook.com/ecobiosciences/